

The BATT Series is a high quality, square sided Project batten range.

It features a white polyester powdercoated steel body and is available with a range of diffusers, reflectors and guards.

The BATT range of battens can utilise either T8 or T5 lamp sources.



Bare batten

## Applications

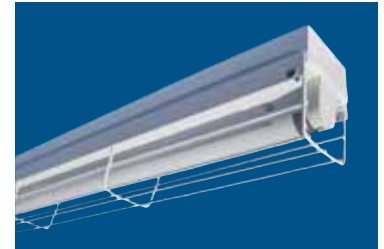
- Schools
- Hospitals
- Libraries
- Retail
- Carparks
- Stairwells
- Eaves
- Pelmet
- Store Rooms

## Optics & Options

- Bare lamp
- Opal diffuser
- Prismatic diffuser
- Semi industrial reflector
- Industrial reflector
- Right angle reflector
- Wire guards
- Aluminium
- Dimming ballasts
- Emergency



Prismatic



Wire guard



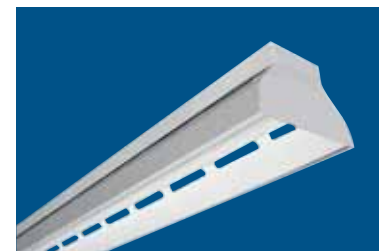
Field Reflector



Right Angle Reflector



Open End Industrial



Closed End Industrial

## Bare Batten

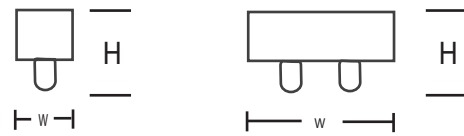
Cat No	Wattage	Optic	L	W	H
BATT075141	1x14w	Bare	570	70	70
BATT075181	1x18w	Bare	615	70	85
BATT075241	1x24w	Bare	570	70	70
BATT075281	1x28w	Bare	1170	70	70
BATT075361	1x36w	Bare	1225	70	85
BATT075541	1x54w	Bare	1170	70	70
BATT075581	1x58w	Bare	1525	70	85
BATT125142	2x14w	Bare	570	70	70
BATT125182	2x18w	Bare	615	125	85
BATT125242	2x24w	Bare	570	70	70
BATT125282	2x28w	Bare	1170	70	70
BATT125362	2x36w	Bare	1225	125	85
BATT125542	2x54w	Bare	1170	70	70
BATT125582	2x58w	Bare	1525	125	85

**Notes:**

- Electronic Ballast in T8 fittings add "EL" to Cat No.
- DSI Dimming add suffix "DSI" to Cat No.
- DALI Dimming add suffix "DALI" to Cat No.
- Maintained Emergency add "EM" to Cat No.
- Slimline version available upon request.



### Dimensional Detail

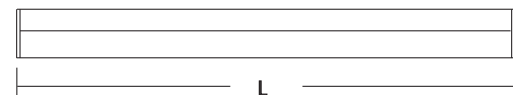
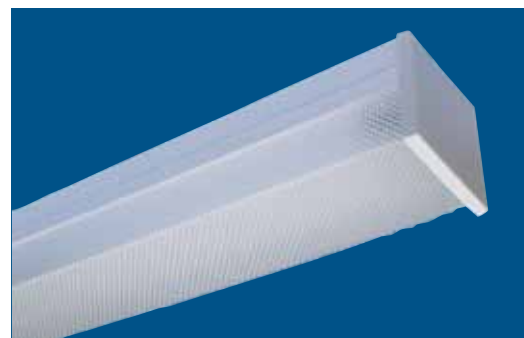


## Diffused Batten

Cat No	Wattage	Optic	L	W	H
BATT075141LE	1x14w	Prismatic	575	70	110
BATT075181LE	1x18w	Prismatic	620	70	110
BATT075241LE	1x24w	Prismatic	575	70	110
BATT075281LE	1x28w	Prismatic	1175	70	110
BATT075361LE	1x36w	Prismatic	1230	70	110
BATT075541LE	1x54w	Prismatic	1175	70	110
BATT075581LE	1x58w	Prismatic	1530	70	110
BATT125142LE	2x14w	Prismatic	575	70	110
BATT125182LE	2x18w	Prismatic	620	125	110
BATT125242LE	2x24w	Prismatic	575	70	110
BATT125282LE	2x28w	Prismatic	1175	70	110
BATT125362LE	2x36w	Prismatic	1230	125	110
BATT125542LE	2x54w	Prismatic	1175	70	110
BATT125582LE	2x58w	Prismatic	1530	125	110

**Notes:**

- Electronic Ballast in T8 fittings add "EL" to Cat No.
- DSI Dimming add suffix "DSI" to Cat No.
- DALI Dimming add suffix "DALI" to Cat No.
- Maintained Emergency add "EM" to Cat No.



## Field Reflector

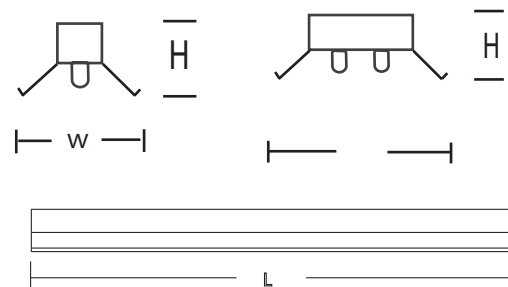
Cat No	Wattage	Optic	L	W	H
BATT075141FR	1x14w	Field Reflector	570	170	90
BATT075181FR	1x18w	Field Reflector	615	170	90
BATT075241FR	1x24w	Field Reflector	570	170	90
BATT075281FR	1x28w	Field Reflector	1170	170	90
BATT075361FR	1x36w	Field Reflector	1225	170	90
BATT075541FR	1x54w	Field Reflector	1170	170	90
BATT075581FR	1x58w	Field Reflector	1525	170	90
BATT125142FR	2x14w	Field Reflector	570	170	90
BATT125182FR	2x18w	Field Reflector	615	220	90
BATT125242FR	2x24w	Field Reflector	570	170	90
BATT125282FR	2x28w	Field Reflector	1170	170	90
BATT125362FR	2x36w	Field Reflector	1225	220	90
BATT125542FR	2x54w	Field Reflector	1170	170	90
BATT125582FR	2x58w	Field Reflector	1525	170	90

**Notes:**

- Electronic Ballast in T8 fittings add "EL" to Cat No.
- DSI Dimming add suffix "DSI" to Cat No.
- DALI Dimming add suffix "DALI" to Cat No.
- Maintained Emergency add "EM" to Cat No.



### Dimensional Detail



## Wire Guarded

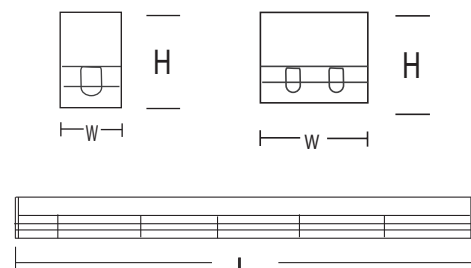
Cat No	Wattage	Optic	L	W	H
BATT075141WG	1x14w	Wire Guard	575	70	110
BATT075181WG	1x18w	Wire Guard	620	70	110
BATT075241WG	1x24w	Wire Guard	575	70	110
BATT075281WG	1x28w	Wire Guard	1175	70	110
BATT075361WG	1x36w	Wire Guard	1230	70	110
BATT075541WG	1x54w	Wire Guard	1175	70	110
BATT075581WG	1x58w	Wire Guard	1530	70	110
BATT125142WG	2x14w	Wire Guard	575	70	110
BATT125182WG	2x18w	Wire Guard	620	125	110
BATT125242WG	2x24w	Wire Guard	575	70	110
BATT125282WG	2x28w	Wire Guard	1175	70	110
BATT125362WG	2x36w	Wire Guard	1230	125	110
BATT125542WG	2x54w	Wire Guard	1175	70	110
BATT125582WG	2x58w	Wire Guard	1530	125	110

**Notes:**

- Electronic Ballast in T8 fittings add "EL" to Cat No.
- DSI Dimming add suffix "DSI" to Cat No.
- DALI Dimming add suffix "DALI" to Cat No.
- Maintained Emergency add "EM" to Cat No.



### Dimensional Detail



## Industrial Reflector

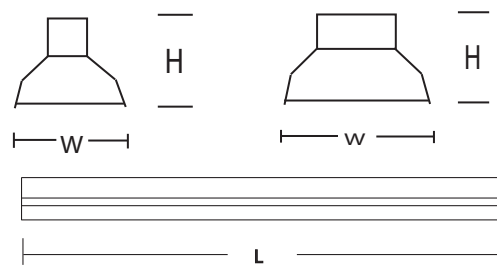
Cat No	Wattage	Optic	L	W	H
BATT075141CE	1x14w	Industrial	570	175	135
BATT075181CE	1x18w	Industrial	615	175	140
BATT075241CE	1x24w	Industrial	570	175	135
BATT075281CE	1x28w	Industrial	1170	175	135
BATT075361CE	1x36w	Industrial	1225	175	140
BATT075541CE	1x54w	Industrial	1170	175	135
BATT075581CE	1x58w	Industrial	1525	175	140
BATT125142CE	2x14w	Industrial	570	175	135
BATT125182CE	2x18w	Industrial	615	230	135
BATT125242CE	2x24w	Industrial	570	175	135
BATT125282CE	2x28w	Industrial	1170	175	135
BATT125362CE	2x36w	Industrial	1225	230	135
BATT125542CE	2x54w	Industrial	1170	175	135
BATT125582CE	2x58w	Industrial	1525	230	135

**Notes:**

- For Open End substitute "OE" for "CE" in Cat No.
- Electronic Ballast in T8 fittings add "EL" to Cat No.
- For slotted add "S" to prefix eg. "OES" or "CES"
- DSI Dimming add suffix "DSI" to Cat No.
- DALI Dimming add suffix "DALI" to Cat No.
- Maintained Emergency add "EM" to Cat No.



Dimensional Detail



## Right Angle Reflector

Cat No	Wattage	Optic	L	W	H
BATT075141RA	1x14w	Right Angle	570	70	112
BATT075181RA	1x18w	Right Angle	615	70	112
BATT075241RA	1x24w	Right Angle	570	70	112
BATT075281RA	1x28w	Right Angle	1170	70	112
BATT075361RA	1x36w	Right Angle	1225	70	112
BATT075541RA	1x54w	Right Angle	1170	70	112
BATT075581RA	1x58w	Right Angle	1525	70	112
BATT125142RA	2x14w	Right Angle	570	70	112
BATT125182RA	2x18w	Right Angle	615	125	112
BATT125242RA	2x24w	Right Angle	570	70	112
BATT125282RA	2x28w	Right Angle	1170	70	112
BATT125362RA	2x36w	Right Angle	1225	125	112
BATT125542RA	2x54w	Right Angle	1170	70	112
BATT125582RA	2x58w	Right Angle	1525	125	112

**Notes:**

- Electronic Ballast in T8 fittings add "EL" to Cat No.
- DSI Dimming add suffix "DSI" to Cat No.
- DALI Dimming add suffix "DALI" to Cat No.
- Maintained Emergency add "EM" to Cat No.



Dimensional Detail

