

Surface Troffer

The SM is a high quality diffused troffer luminaire for surface mounting applications. It features a white polyester powdercoated sheet-steel body and a wide range of diffusing medium.

It utilises T8 lamp sources and conventional gear as standard (electronic gear optional) and T5 and electronic gear as standard.

Recessed luminaires include a 1.5m supply flex and plug as standard



Applications

- Schools
- Offices
- Hospitals
- Libraries
- Retail

Mounting

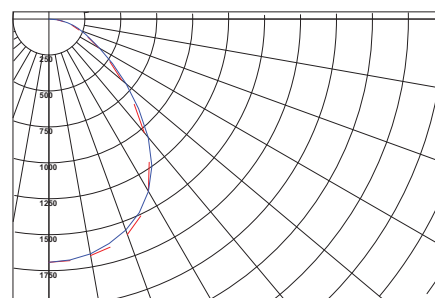
- Surface Mount

Options

- Electronic Ballasts
- Dimmable Ballasts

Optics

- ULB louvre
- Y12 prismatic
- Y15 prismatic
- Y19 prismatic
- Y19 silvertint prismatic
- Y5 Fine rib
- Y7 Course rib
- Refer OEM Pages for lens details.
- Other diffusers available upon request



SM300362YP12 2x36w T8 YP12 Lens
Test Report AS1041

T5 Surface

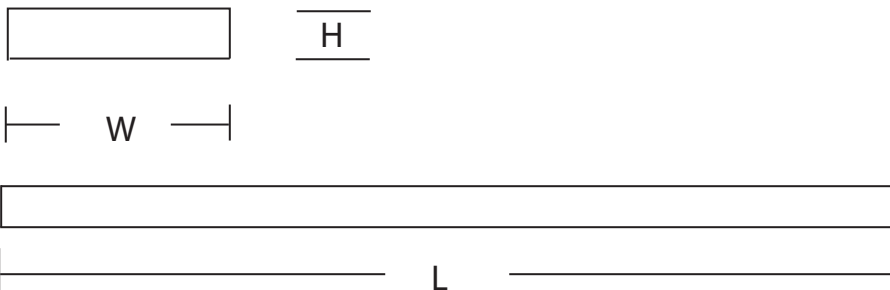


Cat No	Wattage	Mounting	L	W	H
SM150141Y12	1x14w	Surface	630	150	90
SM150241Y12	1x24w	Surface	630	150	90
SM150281Y12	1x28w	Surface	1230	150	90
SM150541Y12	1x54w	Surface	1230	150	90
SM220142Y12	2x14w	Surface	590	220	90
SM220242Y12	2x24w	Surface	590	220	90
SM220282Y12	2x28w	Surface	1190	220	90
SM220542Y12	2x54w	Surface	1190	220	90
SM600143Y12	3x14w	Surface	590	590	60
SM600243Y12	3x24w	Surface	590	590	60
SM600283Y12	3x28w	Surface	1190	590	60
SM600543Y12	3x54w	Surface	1190	590	60
SM600144Y12	4x14w	Surface	590	590	60
SM600244Y12	4x24w	Surface	590	590	60
SM600284Y12	4x28w	Surface	1190	590	60
SM600544Y12	4x54w	Surface	1190	590	60

Notes:

- DSI Dimming add suffix "DSI" to Cat No.
- DALI Dimming add suffix "DALI" to Cat No.
- Replace "Y12" suffix in Cat # with other lens types as required (See front page)
- Suspended Substitute "SUS" for "SM" in Cat No:
- Clip-in frame add "CF" to Cat No.
- Emergency add suffix "EM" to Cat No.

Dimensional Detail



Miro 5 Fixtures

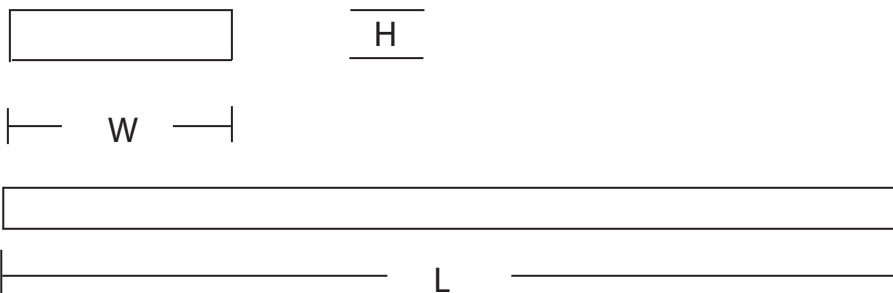
Cat No	Wattage	Mounting	L	W	H
LBSM150141-13SS	1x14w	Surface	630	150	90
LBSM150241-13SS	1x24w	Surface	630	150	90
LBSM150281-24SS	1x28w	Surface	1190	150	90
LBSM150541-24SS	1x54w	Surface	1190	150	90
LBSM220142-26SS	2x14w	Surface	590	220	90
LBSM220242-26SS	2x24w	Surface	590	220	90
LBSM220282-52SS	2x28w	Surface	1190	220	90
LBSM220542-52SS	2x54w	Surface	1190	220	90
LBSM600143-39SS	3x14w	Surface	590	590	60
LBSM600243-39SS	3x24w	Surface	590	590	60
LBSM600283-78SS	3x28w	Surface	1190	590	60
LBSM600543-78SS	3x54w	Surface	1190	590	60
LBSM600144-52SS	4x14w	Surface	590	590	60
LBSM600244-52SS	4x24w	Surface	590	590	60
LBSM600284-96SS	4x28w	Surface	1190	590	60
LBSM600544-96SS	4x54w	Surface	1190	590	60



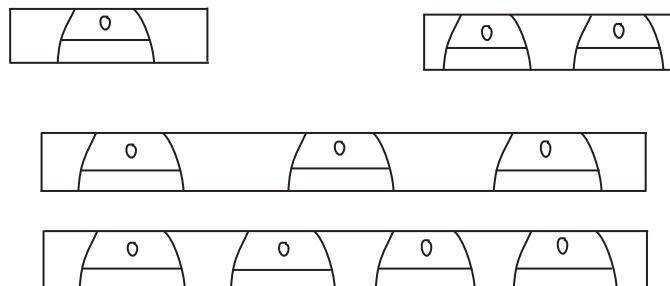
Notes:

- DSI Dimming add suffix "DSI" to Cat No.
- DALI Dimming add suffix "DALI" to Cat No.
- Suspended Substitute "SUS" for "SM" in Cat No:

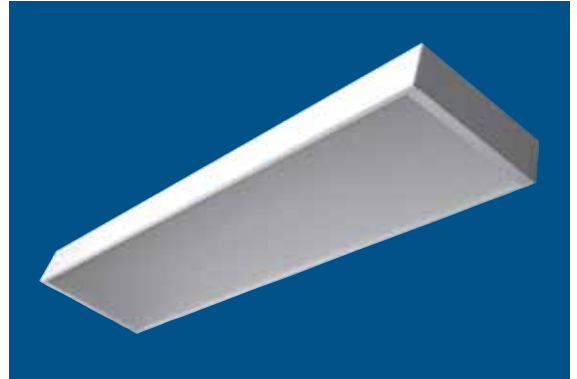
Dimensional Detail



Louvre Configurations



Surface					
Cat No	Wattage	Mounting	L	W	H
SM300181Y12	1x18w	Surface	620	300	105
SM300361Y12	1x36w	Surface	1220	300	105
SM300182Y12	2x18w	Surface	620	300	105
SM300362Y12	2x36w	Surface	1220	300	105
SM300183Y12	3x18w	Surface	620	300	105
SM300363Y12	3x38w	Surface	1220	300	105



Notes:

- Electronic ballast add "EL" to Cat No.
- DSI Dimming add suffix "DSI" to Cat No.
- DALI Dimming add suffix "DALI" to Cat No.
- Replace "Y12" suffix in Cat # with other lens types as required (See front page)
- Emergency add suffix "EM" to Cat No.

Dimensional Detail

