

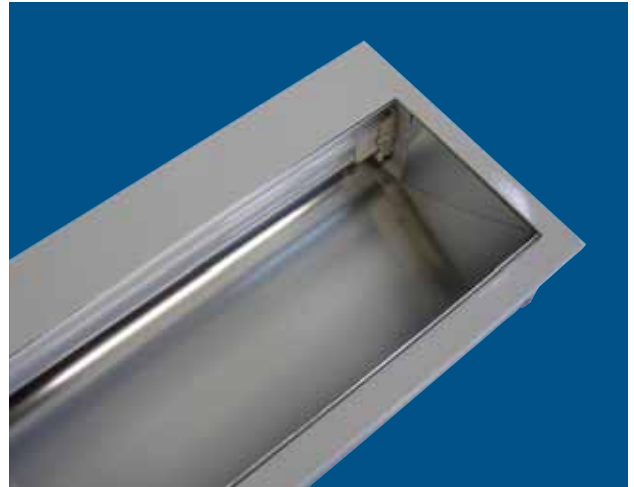
## Wallwasher

The Wallwasher is a asymmetric distribution luminaire for Plaster or T-bar recessed applications.

It features a white polyester powdercoated body and a semi specular aluminium reflector.

It utilises T8 or PLL lamp sources and conventional gear as standard (electronic gear optional) and T5 and electronic gear as standard.

Recessed luminaires include a 1.5m supply flex and plug as standard



---

## Applications

- Offices
- Schools
- Hospitals
- Foyers
- Reception areas
- Retail

## Mounting

- Plaster recessed.
- T-Bar recessed.

## Options

- Electronic Ballasts
- Dimmable Ballasts
- Clear lens.

## Optics

- Asymmetrical reflector.

# Wallwasher T5/PLL

WW

## Wallwasher

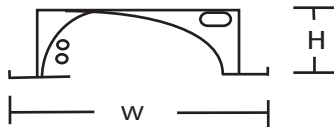
Cat No	Wattage	Mounting	L	W	H
WWP150141	1x14w T5	Plaster/TBar	595	240	90
WWP150241	1x24w T5	Plaster/TBar	595	240	90
WWP150281	1x28w T5	Plaster/TBar	1195	240	90
WWP150541	1x54w T5	Plaster/TBar	1195	240	90
WWP150551PL	1x55w PL	Plaster/TBar	595	240	90



### Notes:

- For T-Bar Substitute "T" for "P" in Cat No.
- DSI Dimming add suffix "DSI" to Cat No.
- DALI Dimming add suffix "DALI" to Cat No.
- Clear Lens add "CL" to Cat No.
- Twin lamp versions available upon request.

### Dimensional Detail



Note: Details subject to change without notice  
Please contact Australume sales for further information.

