

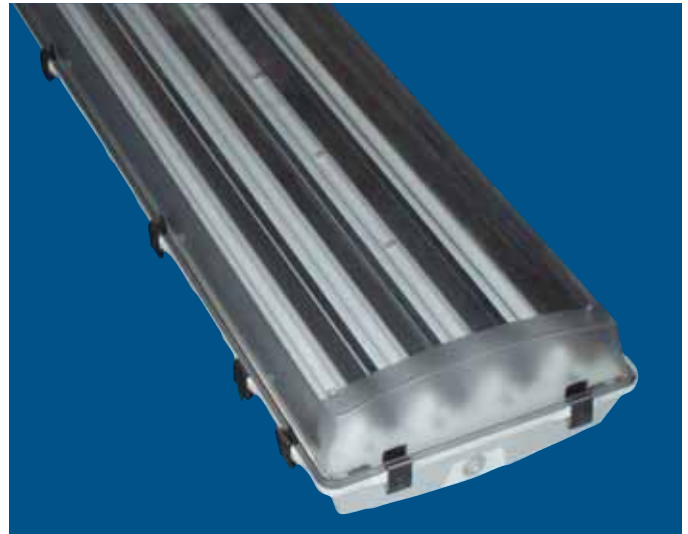
Weatherproof Wide

An adverse location light fitting with IP67 rating, suitable for use in high humidity, damp, dust and corrosive environments designed for T8 and T5 lamps.

G.R.P. grey body, clear polycarbonate lens with internal prisms, stainless steel lockable (vandal resistant) toggle clips.

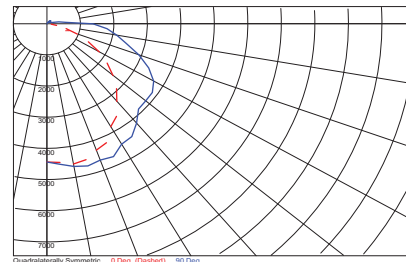
The gear tray is white powder zinc sealed steel, with retaining lanyards for ease of maintenance and safety.

Available in 2,3,4,5 & 6 lamp version of T5 sources complete with electronic gear and 2,3,&4 lamp version of T8 with electronic gear.



Applications

- Food Processing
- Hospitals
- Canopies
- Schools
- Retail
- Carparks
- Stairwells
- Gymnasiums
- Store Rooms



WPW400544 4x54w T5
Report BAL14140.IES

Options

- Dimming ballasts
- Internal Reflector
- Emergency

Weatherproof Wide

Cat No	Wattage	Optic	L	W	H
WPW400282	2x28w	Polycarbonate	1319	371	151
WPW400282	3x28w	Polycarbonate	1319	371	151
WPW400282	4x28w	Polycarbonate	1319	371	151
WPW400282	5x28w	Polycarbonate	1319	371	151
WPW400282	6x28w	Polycarbonate	1319	371	151
WPW400362	2x36w	Polycarbonate	1319	371	151
WPW400363	3x36w	Polycarbonate	1319	371	151
WPW400364	4x36w	Polycarbonate	1319	371	151
WPW400542	2x54w	Polycarbonate	1319	371	151
WPW400543	3x54w	Polycarbonate	1319	371	151
WPW400544	4x54w	Polycarbonate	1319	371	151
WPW400545	5x54w	Polycarbonate	1319	371	151
WPW400546	6x54w	Polycarbonate	1319	371	151



Notes:

- DSI Dimming add suffix "DSI" to Cat No.
- DALI Dimming add suffix "DALI" to Cat No.
- For Acrylic Diffuser substitute "WPW" with "WAW" in Cat No.



Stainless Steel Clips.



Lenses:

100% impact resistant acrylic for maximum light transmission and longevity or UV stabilized polycarbonate for temperature extremes and maximum impact resistance. The face side of the lens is glass clear to maximize efficiency and minimize distortion of reflectors intended distribution. The sides have precise lineal prisms and the ends are lightly frosted to reduce direct glare .

Dimensional Details

