

## Bell

The Bell is a Low brightness suspended luminaire designed for specific task lighting.

It features a white polyester powdercoated body and a semi specular aluminium louvre.

It utilises T5 lamp sources with electronic gear as standard or dimmed when used in conjunction with LSII smart PE cell for Daylight harvesting.



## Applications

- Offices
- Schools
- Hospitals
- Foyers
- Reception areas
- Retail

## Mounting

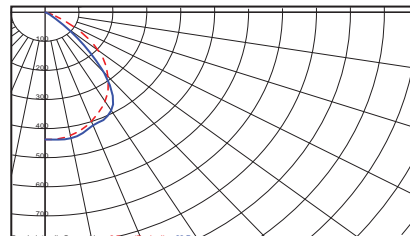
- Suspended

## Options

- Electronic Ballasts
- Dimmable Ballasts

## Optics

- Low Brightness louvre.



BL140281 1x28wT5 24 cell Miro 5  
Test Report LL11892

# Bell T5

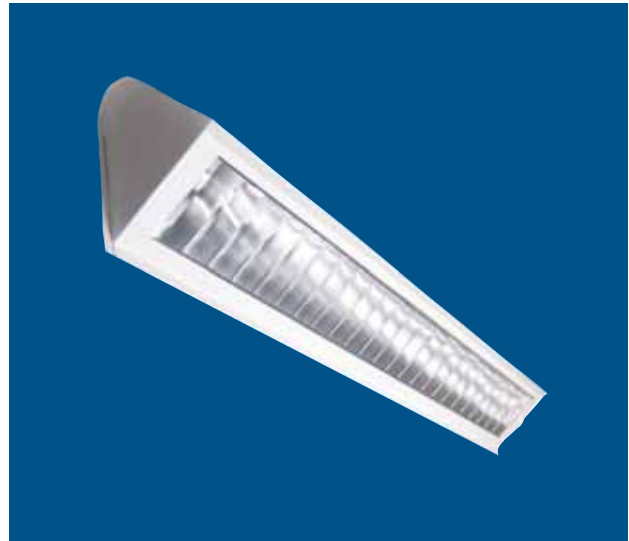
BL

## BELL

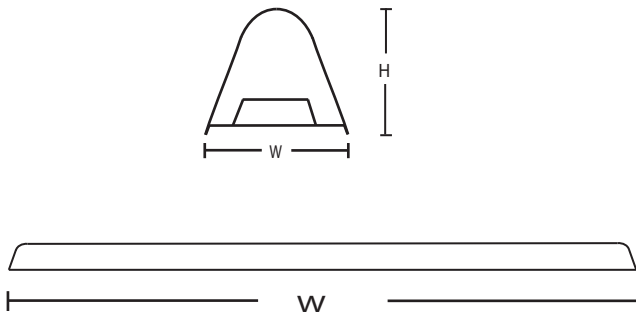
Cat No	Wattage	Optic	L	W	H
BL140281	1x28w	Miro 5	1260	140	110
BL140541	1x54w	Miro 5	1260	140	110

### Notes:

- Electronic Ballast in T8 fittings add "EL" to Cat No.
- DSI Dimming add suffix "DSI" to Cat No.
- DALI Dimming add suffix "DALI" to Cat No.



### Dimensional Detail



Note: Details subject to change without notice  
Please contact Australume sales for further information.